



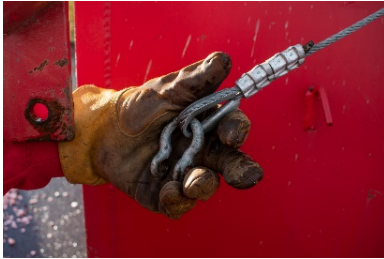
## **LID PROCEDURES**

Congratulations on your container! Whether you're a new customer or returning, we created an easy-to-follow guide on how to work the pins and lids of our containers.

### **HOW TO OPEN THE CONTAINER LID:**

#### **1) DETERMINE WHICH SIDE YOU WOULD WANT TO OPEN YOUR LID ON.**

*(If lid binds when opening, **stop** and figure out why.)*



The cable position will determine what side the lid hinges are on. If the shackle is on the left, hinge pins must be on the left and the lid will open on the right and vice versa.



(Photo 1A)

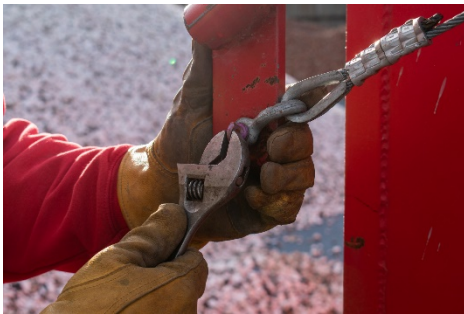


(Photo 1B)

1A: This can is set up with the shackle on the left. This means that hinge pins must be on the left and the lid will open on the **right**.

1B: If the shackle on is on the right, next to the winch, that means that hinge pins must be on the right and the lid will open on the **left**.

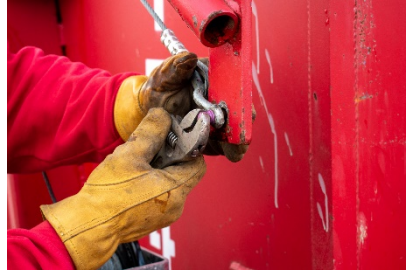
To move the shackle from the left (Photo 1A) to the right (Photo 1B). We suggest you use a crescent wrench.



Loosen the shackle using the wrench.



Flip the pulley.



Attach the shackle to the other side closest to the winch, using the crescent wrench.



Once the shackle is secure, now, the lid will open on the left side.

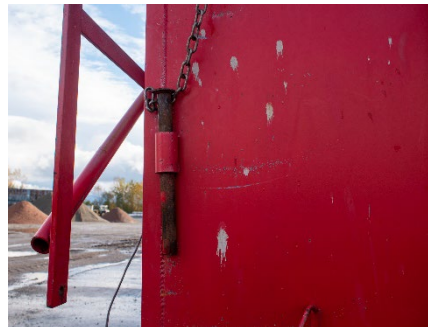
## 2) PULL BOTH PINS AT THE OPENING SIDE.



Unhook the pin's chain from the safety hook. *(Remember to re-hook the pin's chain on when securing the lid.)*



Pull the first pin on the opening side.



Secure the pin after pulling it.

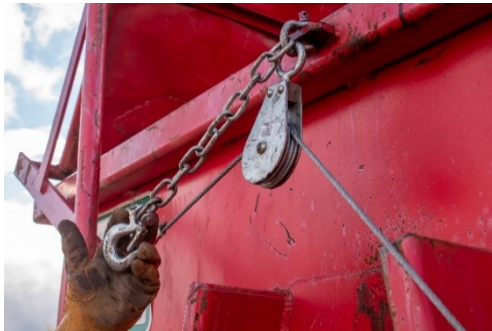


Repeat the steps for removing and securing the second pin. Pins are highlighted with the yellow boxes. After pulling pins on opening side, make sure hinge-side pins and chains are hooked and secure.

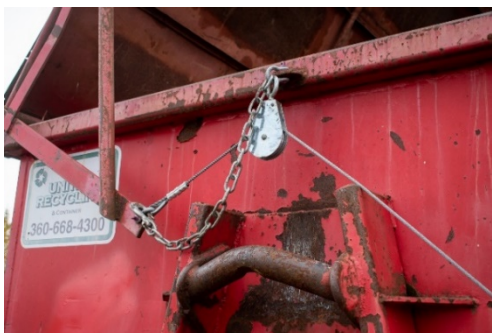
**3) CRANK THE WINCH ALL THE WAY AND INSTALL THE SAFETY CHAIN.**



Crank the winch.



Identify the safety hook.



Latch the safety hook.

**4) CLOSING: MAKE SURE THE CONTAINER IS CLEAR OF ALL OBSTRUCTIONS. MAKE SURE ALL HINGE PINS ARE ENGAGED PROPERLY, REMOVE THE SAFETY CHAIN, LOWER THE LID.**